

# TYPES OF DRAWINGS AVAILABLE

**1) STANDARD DETAIL DRAWING** This drawing is provided to customers for every window and accessory order that is placed with New Morning Windows. It details all the window specifications, has a sill section drawing and a mullion section drawing when applicable.

ASSEMBLED BY: \_\_\_\_\_ CLADED BY: \_\_\_\_\_ GLASS LABEL: \_\_\_\_\_ GLAZED BY: \_\_\_\_\_

## 1. STANDARD DETAIL DRAWING

**WINDOW ELEVATION**

**MULLION SECTION**

**SILL SECTION**

<b>GLASS NOTES</b>	<b>FRAME NOTES</b>	<b>GRILLE NOTES</b>	<b>LOOSE ACCESSORIES</b>
* GRAY GLASS SPACER *	* NO NAILFIN ON SILL *	* INT GRILLE IS REMOVABLE *	<b>PAINTED PARTS</b>
	* C-SILL *		
	* AW-1 STOPS *		
	* FINGERJOINTED MULLCAP *		

CUSTOMER: OUR CUSTOMER	QUANTITY: 1	CYCLE: 1A MAY	BRICKMOLD: ---	EXTRUSION: NARROW VINYL / WHITE
SHIPPING ADDRESS: THEIRTOWN, USA.	OVER UNIT: A/W CASEMENT		GLASS: DIG / HP+ / GRAY SPACER	
NEW MORNING WINDOWS  20845 KEMERODE COURT, LAKEVILLE, MN. 55044 PH: (952) 885-5454 FAX: (952) 885-5490	UNIT DIM: 40 3/4 X 72		TRIM: ---	
	R.O. DIM: 41 1/4 X 72 1/2		GRILLE: 3/4" CROWN / PINE / REMOVABLE	
	EXT. GRILLE: ---		DRAWN BY: DF	
	DISK REF. #: 2000/1A MAY		SALES ORDER #: 12345	

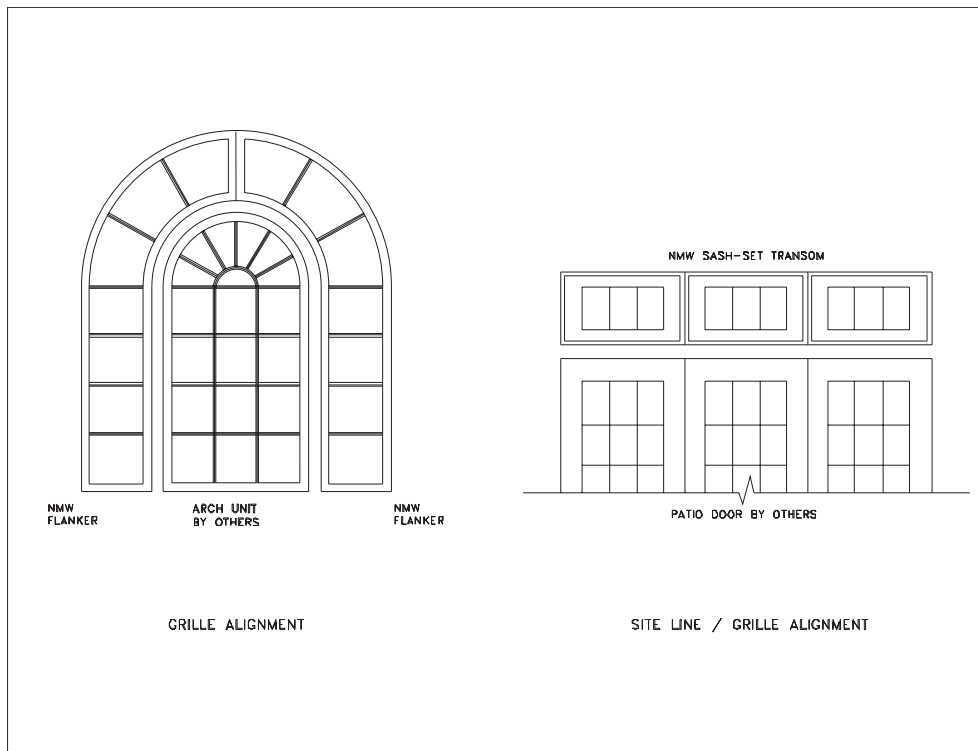
**2) COMPOSITE DRAWING** This drawing is available upon request. It details the exact spacing and radius required (from frame to frame) in order for the units to form a continuous radius. When ordering a window composite, you will be required to approve a drawing before production.

CUSTOMER NAME: \_\_\_\_\_ DATE: \_\_\_\_\_

OUTSIDE FRAME DIMENSIONS

APPROVED BY: \_\_\_\_\_

**3) ALIGNMENT DRAWING** This front elevation drawing allows the customer to review our unit and how it lines-up with another manufacturer's unit. Customers can then verify sight line and grille alignment issues.



**4) MULLED UNIT DETAIL** This drawing shows our unit mulled directly to another manufacturer's unit. Its availability is dependent upon our access to the other manufacturer's frame details. Call our Customer Service Department for more information.

